

KEY

- Redline Boundary (the Site)
- Solar Array Area
- Cable Route Corridor
- Access Route Corridor
- National Grid Bicker Fen Substation
- Access Route

Incident Severity

- ! Serious
- ! Slight
- ! Fatal

Notes:
Boundaries are indicative.

The Redline Boundary (the Site) contains information provided by Ardent Management for the Solar Array Area on 07/07/2023, the Cable Route Corridor on 28/07/2023, and the Access Route Corridor on 26/10/2023.

Contains public sector information licensed under the Open Government Licence v3.0, obtained from Crashmap.co.uk, Locations approximate only.

Traffic data comprises Annual Average Daily Traffic (AADT) measured in units of vehicles.

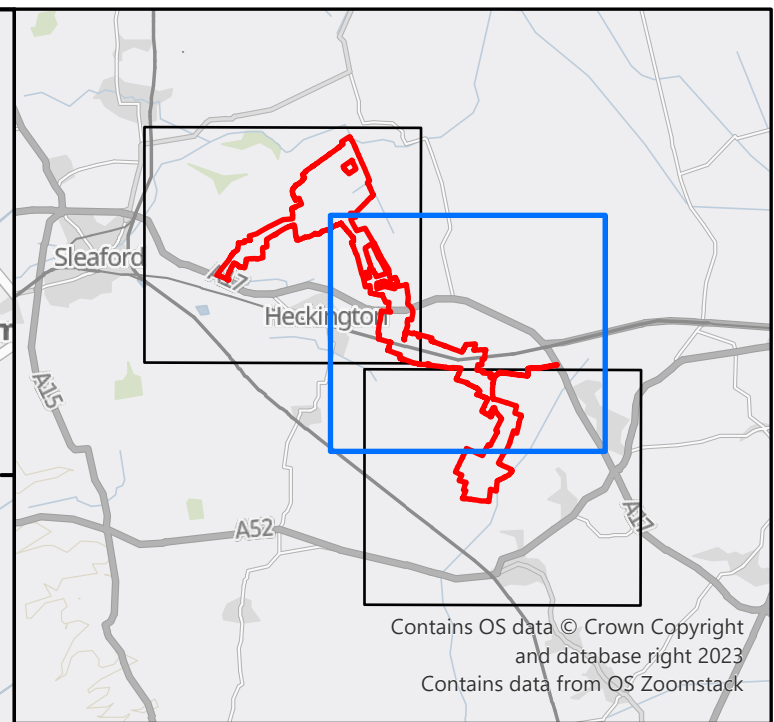
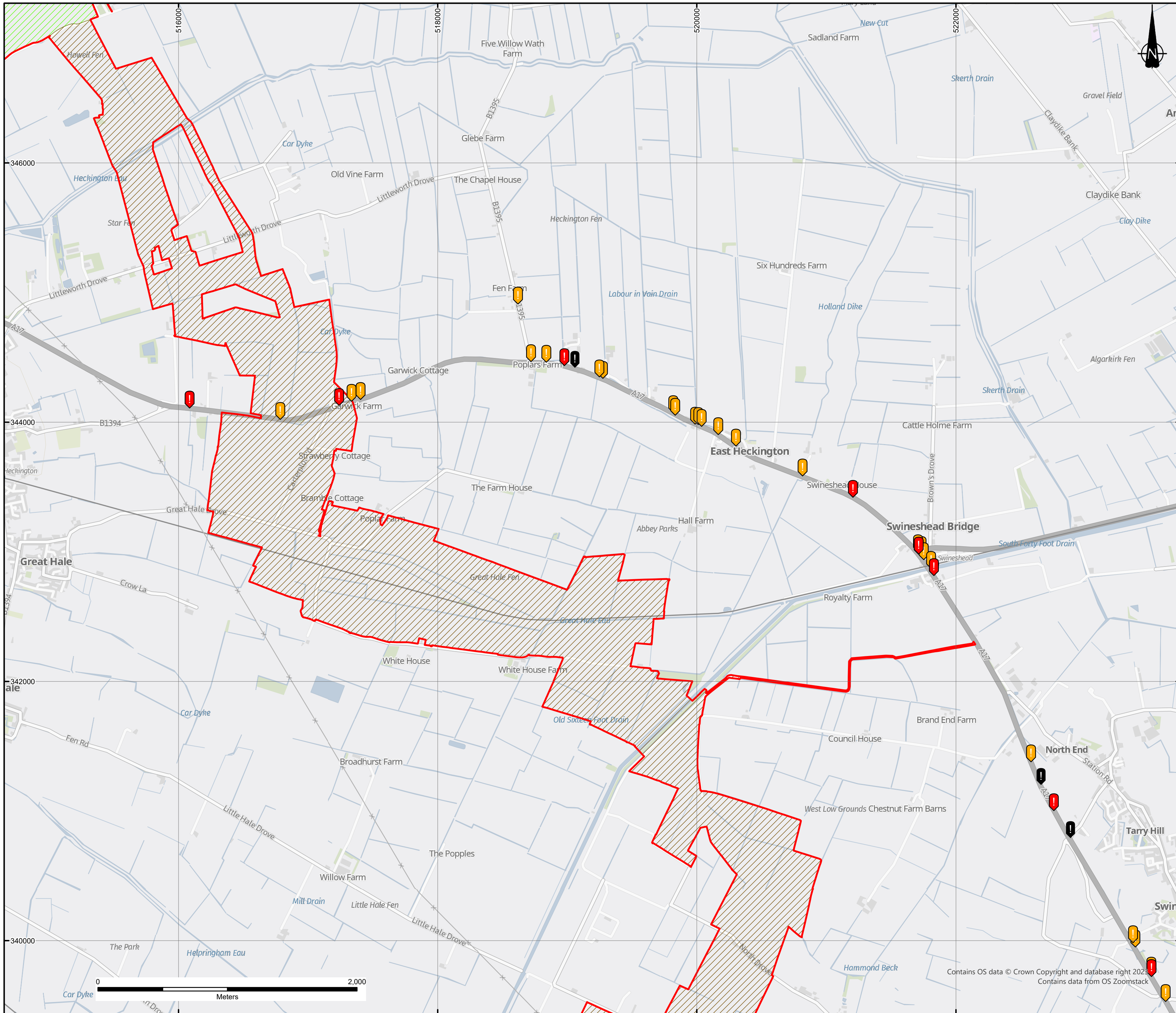
REV	AMENDED LEGEND AND NOTES	DATE	CP	IC	IC
1	FIRST ISSUE	04/01/24	CP	IC	IC
	DETAILS	DATE	DRAWN	CHK'D	APP'D

CLIENT
BEACON FEN ENERGY PARK LTD

PROJECT
BEACON FEN ENERGY PARK

DRAWING TITLE
**FIGURE 9.3
LOCATIONS OF ROAD TRAFFIC ACCIDENTS 2018-2022
SHEET 1 OF 3**

DRG No ST19595-172	REV B	SUIT. CODE --
DRG SIZE A2	SCALE 1:20,000	DATE 04/01/2024
DRAWN BY RCB	CHECKED BY IC	APPROVED BY IC



KEY

- Redline Boundary (the Site)
- Solar Array Area
- Cable Route Corridor
- Access Route Corridor
- National Grid Bicker Fen Substation
- Access Route

Incident Severity

- ! Serious
- ! Slight
- ! Fatal

Notes:
Boundaries are indicative.

The Redline Boundary (the Site) contains information provided by Ardent Management for the Solar Array Area on 07/07/2023, the Cable Route Corridor on 28/07/2023, and the Access Route Corridor on 26/10/2023.

Contains public sector information licensed under the Open Government Licence v3.0, obtained from Crashmap.co.uk, Locations approximate only.

Traffic data comprises Annual Average Daily Traffic (AADT) measured in units of vehicles.

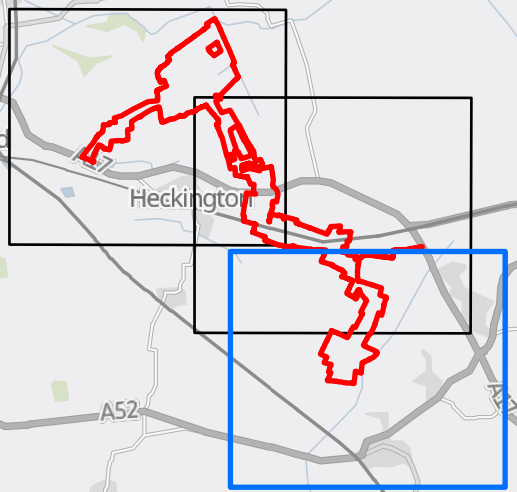
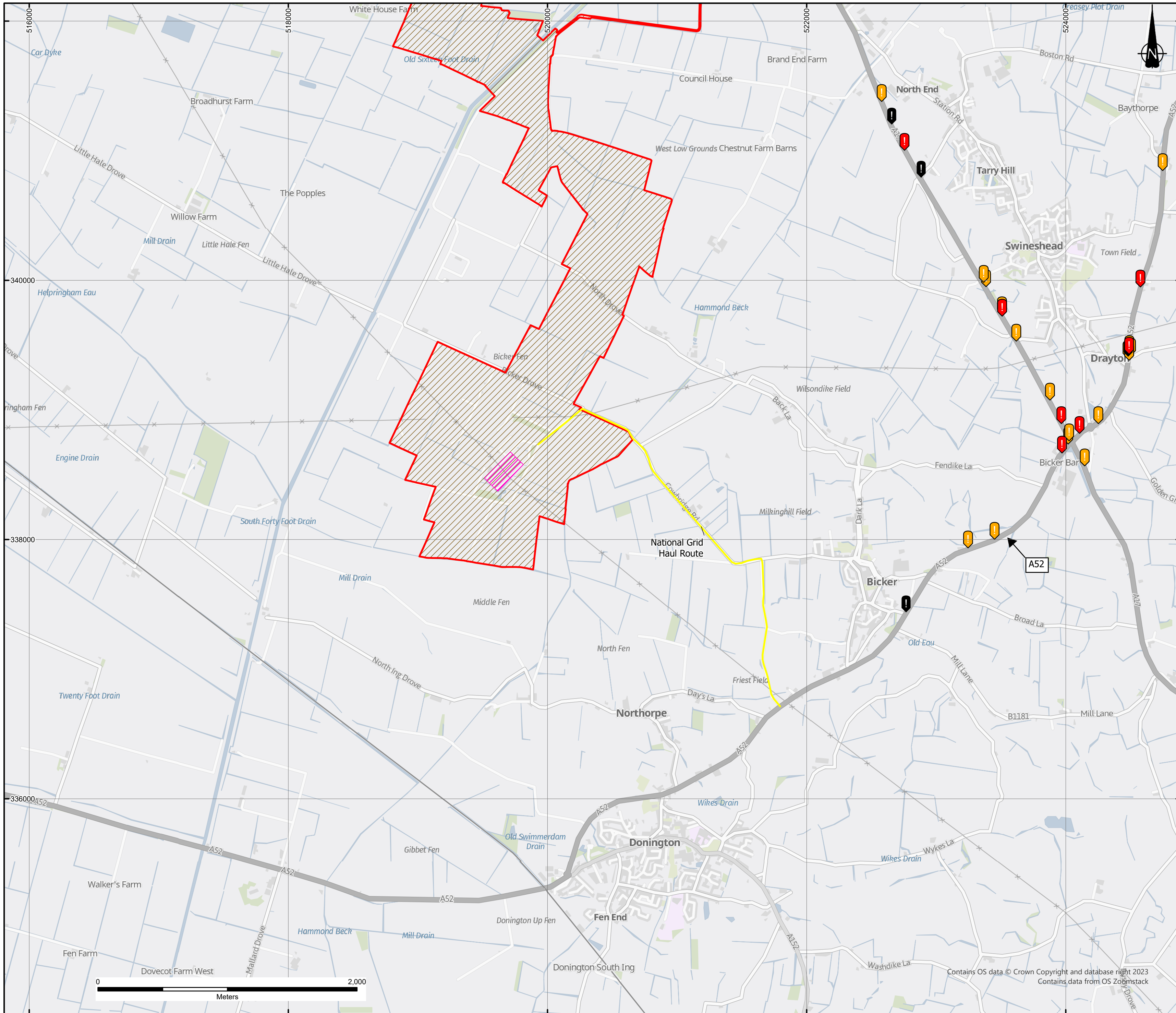
B A	AMENDED LEGEND AND NOTES FIRST ISSUE	04/01/24 14/12/23	CP CP	IC IC	IC IC
REVISION	DETAILS	DATE	DRAWN	CHK'D	APP'D

CLIENT
BEACON FEN ENERGY PARK LTD

PROJECT
BEACON FEN ENERGY PARK

DRAWING TITLE
**FIGURE 9.3
LOCATIONS OF ROAD TRAFFIC ACCIDENTS 2018-2022
SHEET 2 OF 3**

DRG No ST19595-172	REV B	SUIT. CODE --
DRG SIZE A2	SCALE 1:20,000	DATE 04/01/2024
DRAWN BY RCB	CHECKED BY IC	APPROVED BY IC



Contains OS data © Crown Copyright and database right 2023
Contains data from OS Zoomstack

- KEY**
- Redline Boundary (the Site)
 - Solar Array Area
 - Cable Route Corridor
 - Access Route Corridor
 - National Grid Bicker Fen Substation
 - Access Route

- Incident Severity**
- Serious
 - Slight
 - Fatal

Notes:
Boundaries are indicative.

The Redline Boundary (the Site) contains information provided by Ardent Management for the Solar Array Area on 07/07/2023, the Cable Route Corridor on 28/07/2023, and the Access Route Corridor on 26/10/2023.

Contains public sector information licensed under the Open Government Licence v3.0, obtained from Crashmap.co.uk, Locations approximate only.

Traffic data comprises Annual Average Daily Traffic (AADT) measured in units of vehicles.

REVISION	DETAILS	DATE	DRAWN	CHECKED	APPD
B A	AMENDED LEGEND AND NOTES FIRST ISSUE	04/01/24 14/12/23	CP	IC	IC

CLIENT
BEACON FEN ENERGY PARK LTD

PROJECT
BEACON FEN ENERGY PARK

DRAWING TITLE
**FIGURE 9.3
LOCATIONS OF ROAD TRAFFIC ACCIDENTS 2018-2022
SHEET 3 OF 3**

DRG No	ST19595-172	REV	B	SUIT. CODE	--
--------	-------------	-----	---	------------	----

DRG SIZE	A2	SCALE	1:20,000	DATE	04/01/2024
----------	----	-------	----------	------	------------

DRAWN BY	RCB	CHECKED BY	IC	APPROVED BY	IC
----------	-----	------------	----	-------------	----

