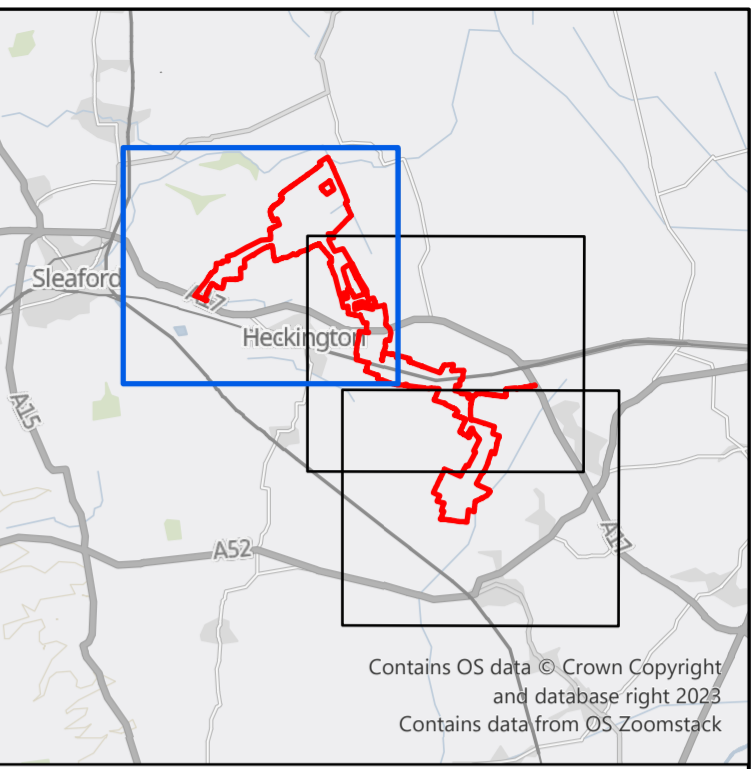


A17 Estimated AADT  
2028: 19000  
2051: 20000

Development AADT  
37 vehicles  
25 HGVs

Development AADT  
37 vehicles  
25 HGVs

Development AADT  
37 vehicles  
25 HGVs



Contains OS data © Crown Copyright  
and database right 2023  
Contains data from OS Zoomstack

**KEY**

- Redline Boundary (the Site)
- Solar Array Area
- Cable Route Corridor
- Access Route Corridor
- National Grid Bicker Fen Substation
- Access Route
- ➔ Development Related Traffic
- Traffic Count Site - DFT
- Traffic Count Site -Heckington Fen Energy Park
- Traffic Count Site - LCC

**Notes:**  
Boundaries are indicative.

The Redline Boundary (the Site) contains information provided by Ardent Management for the Solar Array Area on 07/07/2023, the Cable Route Corridor on 28/07/2023, and the Access Route Corridor on 26/10/2023.

Contains public sector information licensed under the Open Government Licence v3.0.

Traffic data comprises Annual Average Daily Traffic (AADT) measured in units of vehicles.

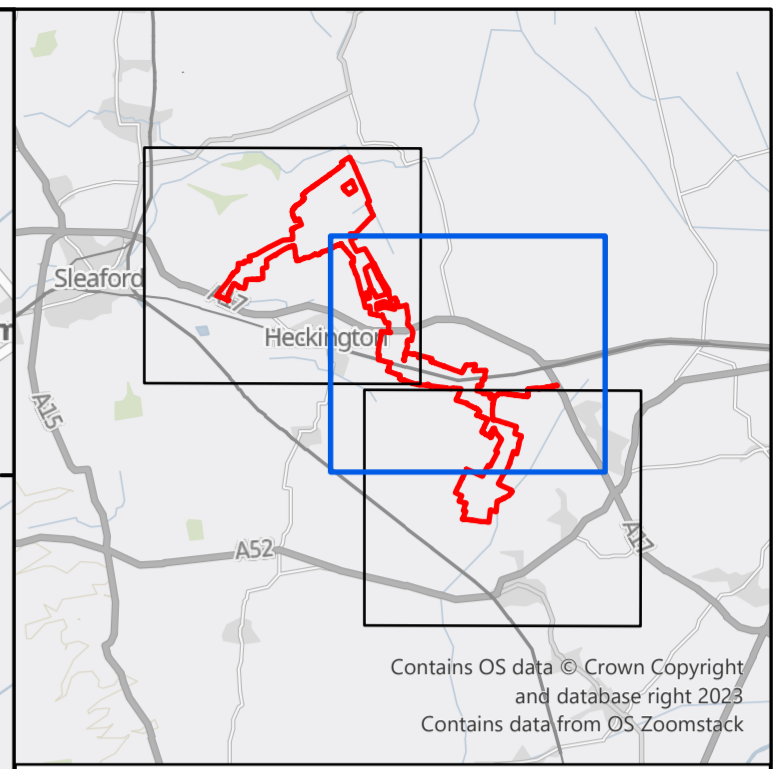
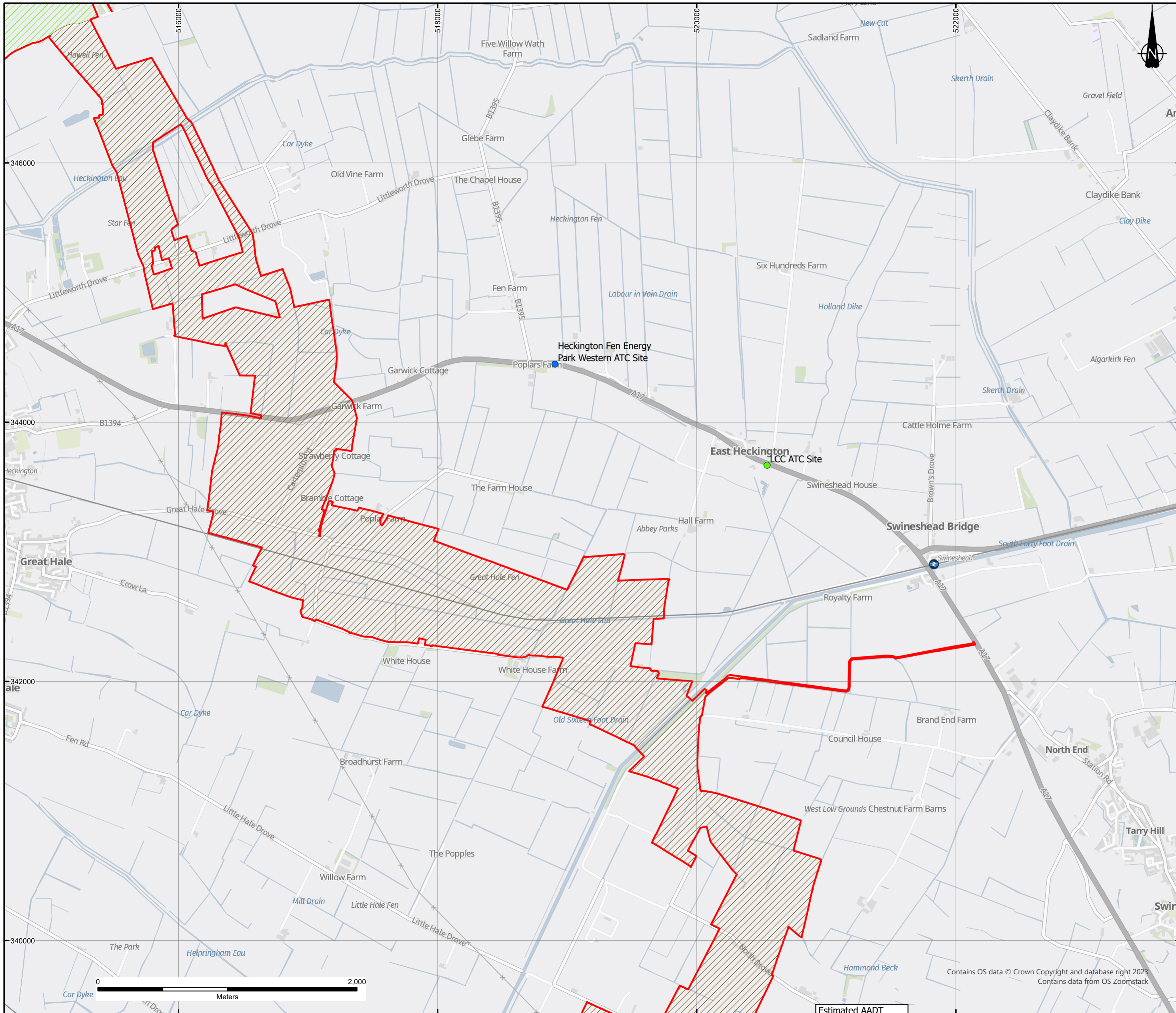
B A	AMENDED LEGEND AND NOTES FIRST ISSUE	04/01/24 14/12/23	CP CP	IC IC	IC IC
REVISION	DETAILS	DATE	DRAWN	CHK'D	APP'D

CLIENT  
**BEACON FEN ENERGY PARK LTD**

PROJECT  
**BEACON FEN ENERGY PARK**

DRAWING TITLE  
**FIGURE 9.2  
FORECASTS OF TRAFFIC ON SELECTED ROADS  
IN 2028 AND 2051  
SHEET 1 OF 3**

DRG No ST19595-170	REV A	SUIT. CODE --
DRG SIZE A2	SCALE 1:20,000	DATE 04/01/2024
DRAWN BY CP	CHECKED BY IC	APPROVED BY IC



- KEY**
- Redline Boundary (the Site)
  - Solar Array Area
  - Cable Route Corridor
  - Access Route Corridor
  - National Grid Bicker Fen Substation
  - Access Route
  - ➔ Development Related Traffic
  - Traffic Count Site - DFT
  - Traffic Count Site - Heckington Fen Energy Park
  - Traffic Count Site - LCC

**Notes:**  
Boundaries are indicative.

The Redline Boundary (the Site) contains information provided by Ardent Management for the Solar Array Area on 07/07/2023, the Cable Route Corridor on 28/07/2023, and the Access Route Corridor on 26/10/2023.

Contains public sector information licensed under the Open Government Licence v3.0.

Traffic data comprises Annual Average Daily Traffic (AADT) measured in units of vehicles.

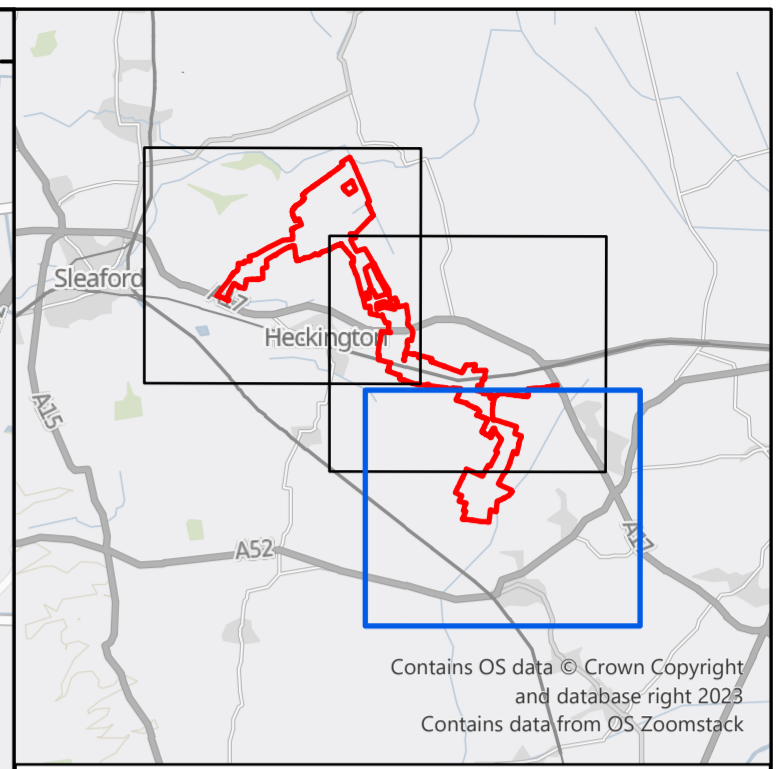
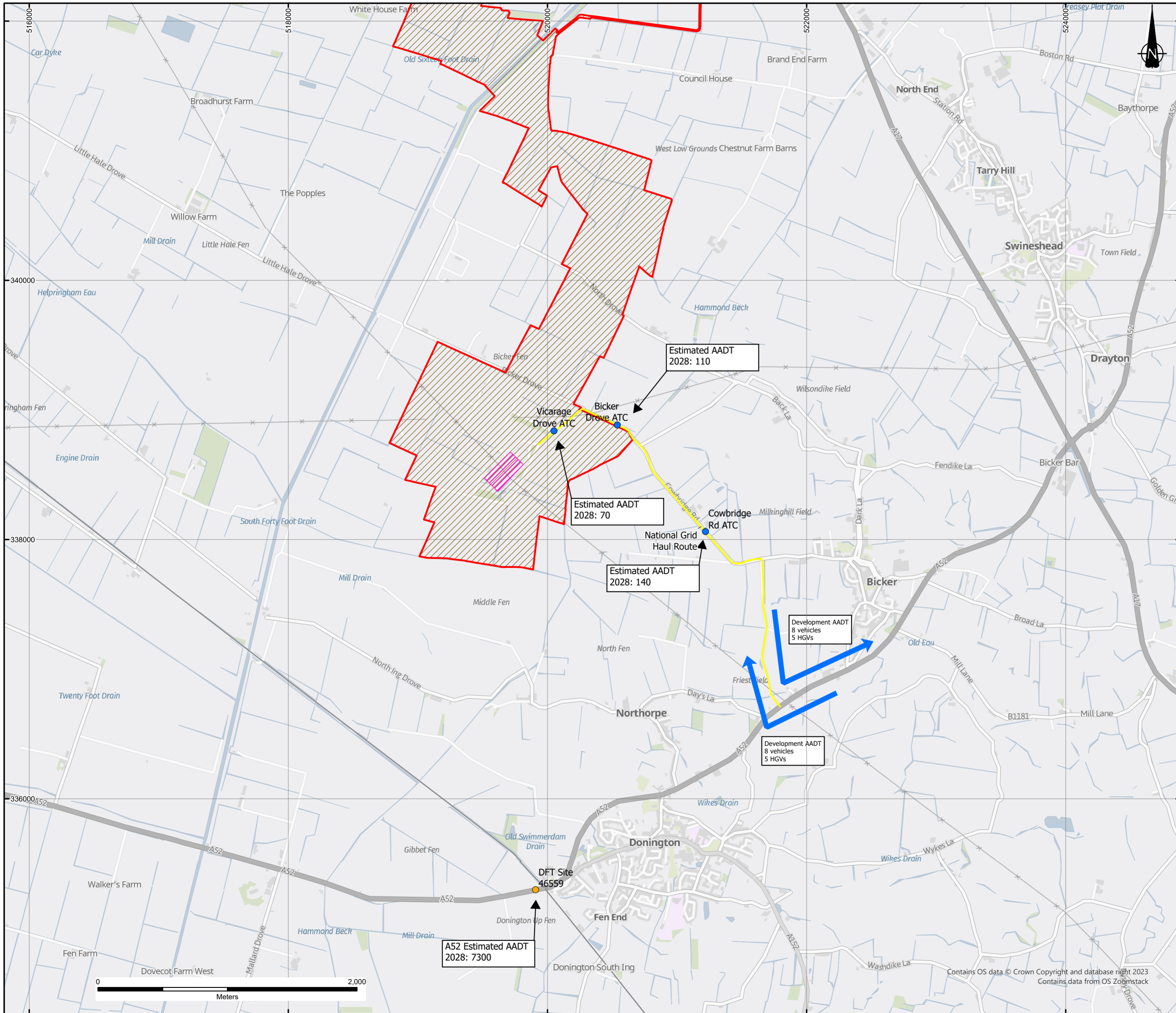
B A	AMENDED LEGEND AND NOTES FIRST ISSUE	04/01/24 14/12/23	CP CP	IC IC	IC IC
REVISION	DETAILS	DATE	DRAWN	CHECKED	APPROVED

CLIENT  
**BEACON FEN ENERGY PARK LTD**

PROJECT  
**BEACON FEN ENERGY PARK**

DRAWING TITLE  
**FIGURE 9.2  
FORECASTS OF TRAFFIC ON SELECTED ROADS  
IN 2028 AND 2051  
SHEET 2 OF 3**

DRG No ST19595-170	REV A	SUIT. CODE --
DRG SIZE A2	SCALE 1:20,000	DATE 04/01/2024
DRAWN BY CP	CHECKED BY IC	APPROVED BY IC



Contains OS data © Crown Copyright and database right 2023  
Contains data from OS Zoomstack

- KEY**
- Redline Boundary (the Site)
  - Solar Array Area
  - Cable Route Corridor
  - Access Route Corridor
  - National Grid Bicker Fen Substation
  - Access Route
  - ➔ Development Related Traffic
  - Traffic Count Site - DFT
  - Traffic Count Site - Heckington Fen Energy Park
  - Traffic Count Site - LCC

**Notes:**  
Boundaries are indicative.  
The Redline Boundary (the Site) contains information provided by Ardent Management for the Solar Array Area on 07/07/2023, the Cable Route Corridor on 28/07/2023, and the Access Route Corridor on 26/10/2023.  
Contains public sector information licensed under the Open Government Licence v3.0.  
Traffic data comprises Annual Average Daily Traffic (AADT) measured in units of vehicles.

B A	AMENDED LEGEND AND NOTES FIRST ISSUE	04/01/24 14/12/23	CP CP	IC IC	IC IC
REVISION	DETAILS	DATE	DRAWN	CHECKED	APPROVED

CLIENT  
**BEACON FEN ENERGY PARK LTD**

PROJECT  
**BEACON FEN ENERGY PARK**

DRAWING TITLE  
**FIGURE 9.2  
FORECASTS OF TRAFFIC ON SELECTED ROADS  
IN 2028 AND 2051  
SHEET 3 OF 3**

DRG No	ST19595-170	REV	A	SUIT. CODE	--
DRG SIZE	A2	SCALE	1:20,000	DATE	04/01/2024
DRAWN BY	CP	CHECKED BY	IC	APPROVED BY	IC