

KEY

- Redline Boundary (the Site)
- Solar Array Area
- Cable Route Corridor
- Access Route Corridor
- National Grid Bicker Fen Substation
- District/Borough Council Boundary
- Access Route
- Traffic Count Site - DFT
- Traffic Count Site -Heckington Fen Energy Park
- Traffic Count Site - LCC

Notes:

Boundaries are indicative.

The Redline Boundary (the Site) contains information provided by Ardent Management for the Solar Array Area on 07/07/2023, the Cable Route Corridor on 28/07/2023, and the Access Route Corridor on 26/10/2023.

Contains public sector information licensed under the Open Government Licence v3.0.

Traffic data comprises Annual Average Daily Traffic (AADT) measured in units of vehicles.

B	NOTES AND LEGEND AMENDMENT	04/01/24	CP	IC	IC
A	FIRST ISSUE	14/12/23	CP	IC	IC
REVISION	DETAILS	DATE	DRAWN	CHECKED	APPROVED

CLIENT

BEACON FEN ENERGY PARK LTD

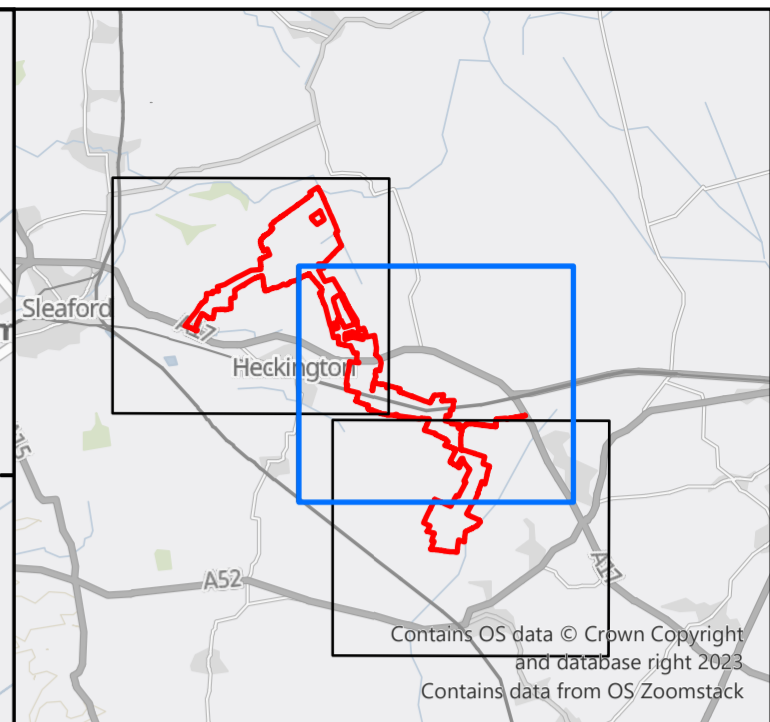
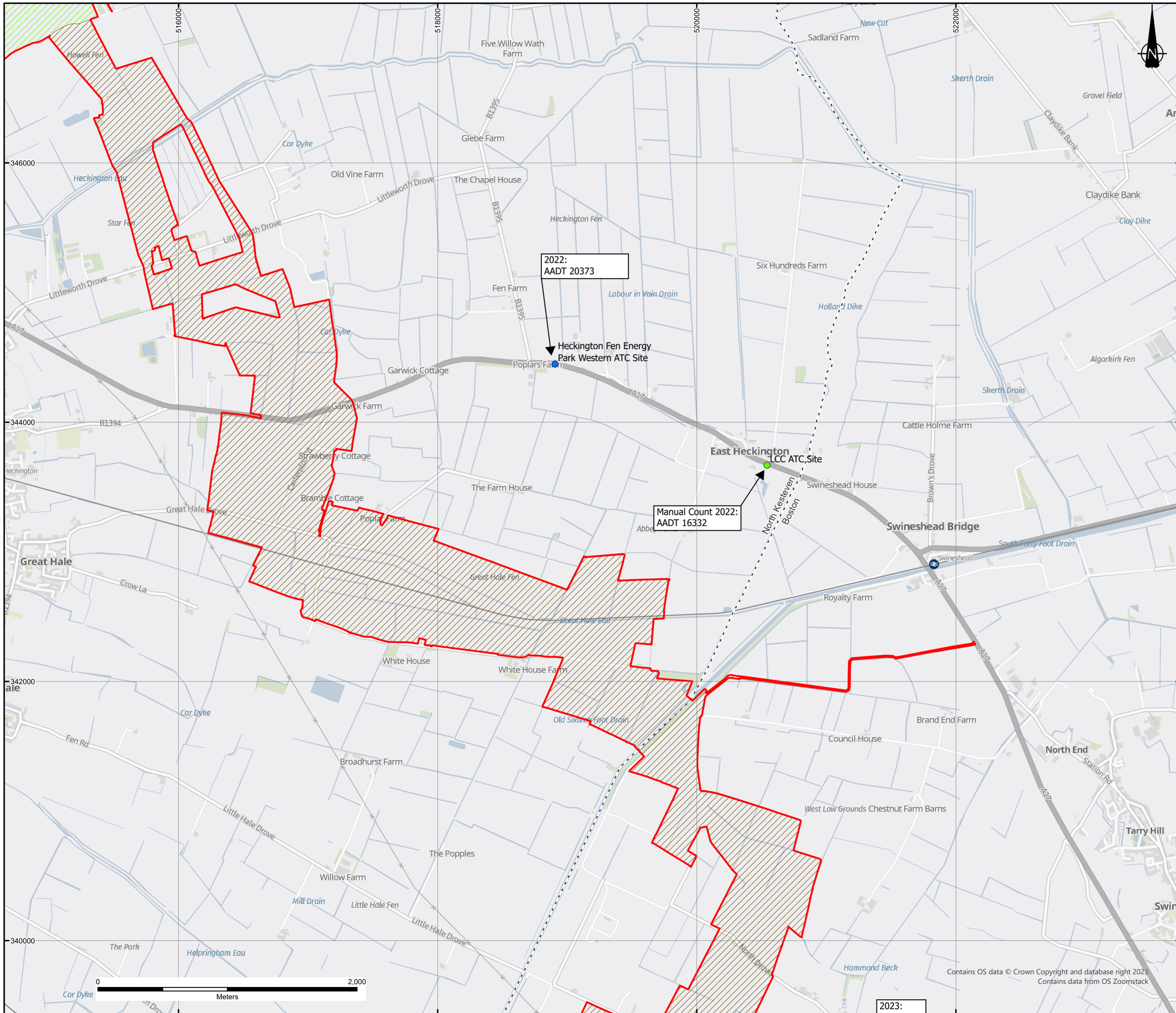
PROJECT

BEACON FEN ENERGY PARK

DRAWING TITLE

**FIGURE 9.1
LOCATION PLAN, ACCESS ROUTES AND
MOST RECENT TRAFFIC COUNTS
SHEET 1 OF 3**

DRG No	ST19595-143	REV	B	SUIT. CODE	--
DRG SIZE	A2	SCALE	1:20,000	DATE	04/01/2024
DRAWN BY	CP	CHECKED BY	IC	APPROVED BY	IC



KEY

- Redline Boundary (the Site)
- Solar Array Area
- Cable Route Corridor
- Access Route Corridor
- National Grid Bicker Fen Substation
- District/Borough Council Boundary
- Access Route
- Traffic Count Site - DFT
- Traffic Count Site - Heckington Fen Energy Park
- Traffic Count Site - LCC

Notes:

Boundaries are indicative.

The Redline Boundary (the Site) contains information provided by Ardent Management for the Solar Array Area on 07/07/2023, the Cable Route Corridor on 28/07/2023, and the Access Route Corridor on 26/10/2023.

Contains public sector information licensed under the Open Government Licence v3.0.

Traffic data comprises Annual Average Daily Traffic (AADT) measured in units of vehicles.

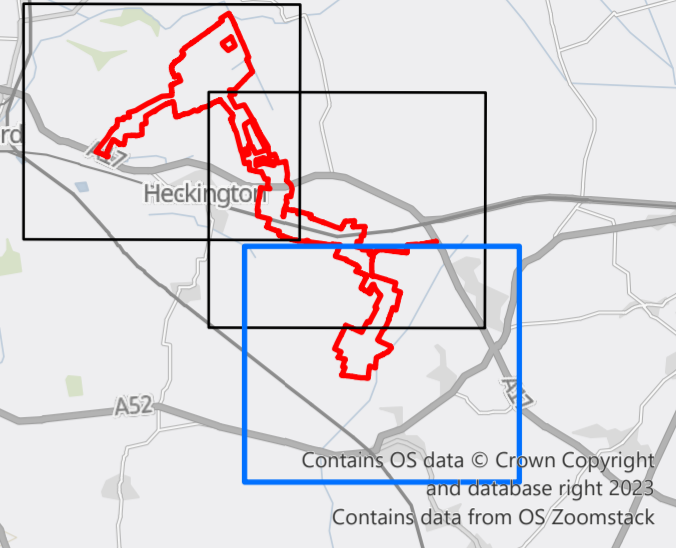
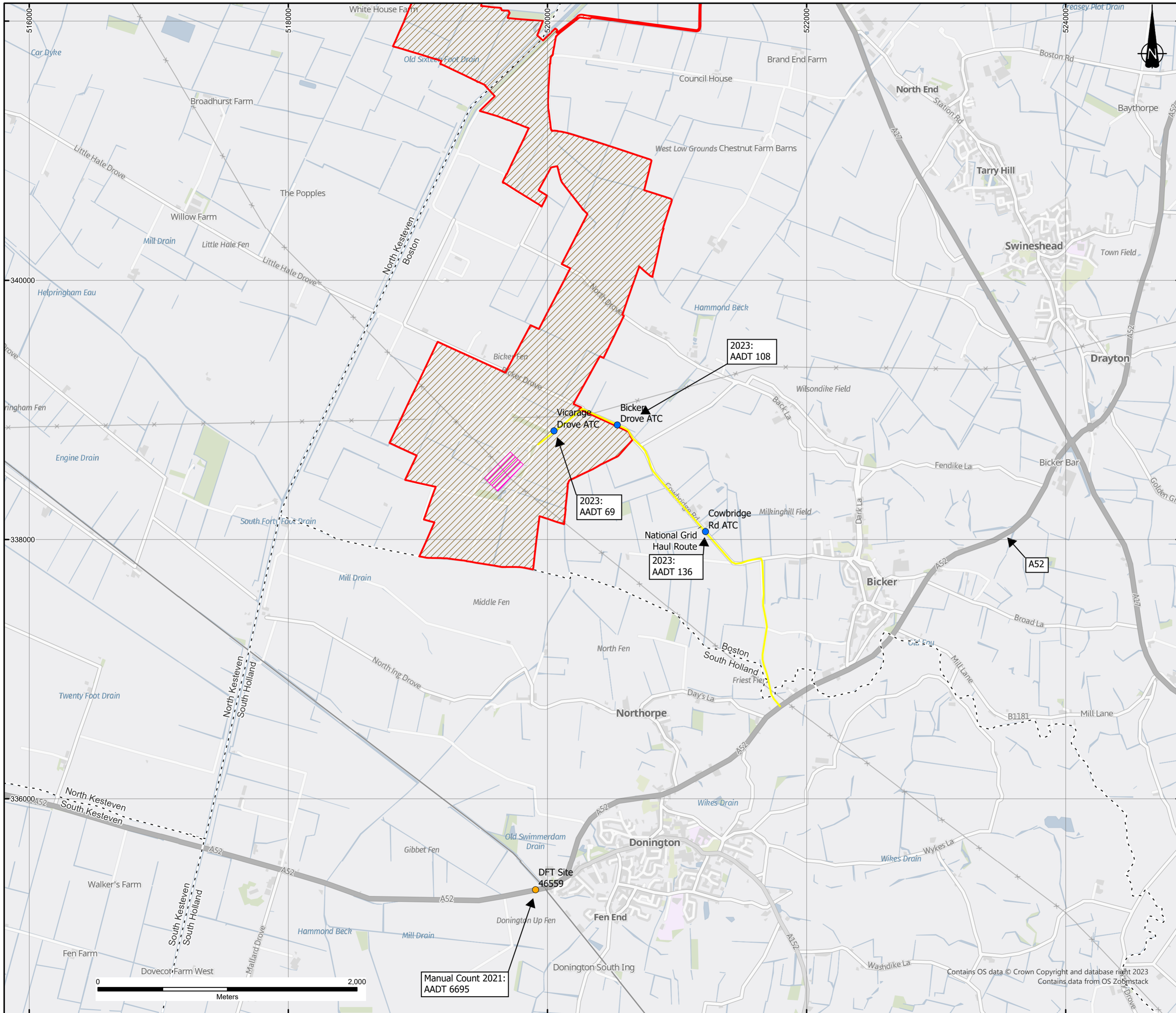
B	NOTES AND LEGEND AMENDMENT	04/01/24	CP	IC	IC
A	FIRST ISSUE	14/12/23	CP	IC	IC
REVISION	DETAILS	DATE	DRAWN	CHECKED	APPROVED

CLIENT
BEACON FEN ENERGY PARK LTD

PROJECT
BEACON FEN ENERGY PARK

DRAWING TITLE
**FIGURE 9.1
LOCATION PLAN, ACCESS ROUTES AND
MOST RECENT TRAFFIC COUNTS
SHEET 2 OF 3**

DRG No ST19595-143	REV B	SUIT. CODE --
DRG SIZE A2	SCALE 1:20,000	DATE 04/01/2024
DRAWN BY CP	CHECKED BY IC	APPROVED BY IC



KEY

- Redline Boundary (the Site)
- Solar Array Area
- Cable Route Corridor
- Access Route Corridor
- National Grid Bicker Fen Substation
- District/Borough Council Boundary
- Access Route
- Traffic Count Site - DFT
- Traffic Count Site - Heckington Fen Energy Park
- Traffic Count Site - LCC

Notes:
Boundaries are indicative.

The Redline Boundary (the Site) contains information provided by Ardent Management for the Solar Array on 07/07/2023, the Cable Route Corridor on 28/07/2023, and the Access Route Corridor on 26/10/2023.

Contains public sector information licensed under the Open Government Licence v3.0.

Traffic data comprises Annual Average Daily Traffic (AADT) measured in units of vehicles.

B	NOTES AND LEGEND AMENDMENT	04/01/24	CP	IC	IC
A	FIRST ISSUE	14/12/23	CP	IC	IC
REVISION	DETAILS	DATE	DRAWN	CHECKED	APPROVED

CLIENT
BEACON FEN ENERGY PARK LTD

PROJECT
BEACON FEN ENERGY PARK

DRAWING TITLE
**FIGURE 9.1
LOCATION PLAN, ACCESS ROUTES AND
MOST RECENT TRAFFIC COUNTS
SHEET 3 OF 3**

DRG No ST19595-143	REV B	SUIT. CODE --
-----------------------	----------	------------------

DRG SIZE A2	SCALE 1:20,000	DATE 04/01/2024
----------------	-------------------	--------------------

DRAWN BY CP	CHECKED BY IC	APPROVED BY IC
----------------	------------------	-------------------

