

BEACON FEN ENERGY PARK

NEWSLETTER

SUMMER
2023

Update from our Director, James Hartley-Bond



Welcome to the first newsletter from Beacon Fen Energy Park. We are keen to keep residents up-to-date on the project with the latest news following our early (non-statutory) consultation in May and June 2023. In this newsletter, you will find the latest information, including a map outlining the project as it now stands following our withdrawal of Beacon Fen South.

We were delighted so many local residents took part in our early (non-statutory) consultation to have their say on our proposals and I'd like to thank everybody for their input.

Our focus has now turned to refining our proposals for Beacon Fen Energy Park, which will be presented during statutory consultation. We are once again looking forward to hearing your views on the project, which will include a narrowed down cable route corridor linking Beacon Fen Energy Park to the nearby Bicker Fen substation. We look forward to welcoming you to our statutory in-person events and webinars in early 2024, which will be advertised nearer the time.

If you have an email address, I invite you to sign up to our digital mailing list by visiting beaconfenenergypark.co.uk/contact/ to ensure you receive project updates. Don't hesitate to get in touch via the channels listed on the back of this newsletter to speak to a member of the team about Beacon Fen Energy Park.

Latest news

BEACON FEN SOUTH WITHDRAWN FROM PROPOSALS FOLLOWING EARLY CONSULTATION

Beacon Fen South, which was planned for land southwest of Helpringham and Burton Pedwardine, has been removed from our proposals for Beacon Fen Energy Park. This is because interaction with a nearby proposed Anglian Water Lincolnshire reservoir could have meant delays to the overall delivery of the project.

Our project could commence construction in 2026; however, due to its scale and nature, the proposed reservoir's Development Consent Order (DCO) application will not be determined by then which could have caused delays to Beacon Fen Energy Park as a whole.

Our plans now include:

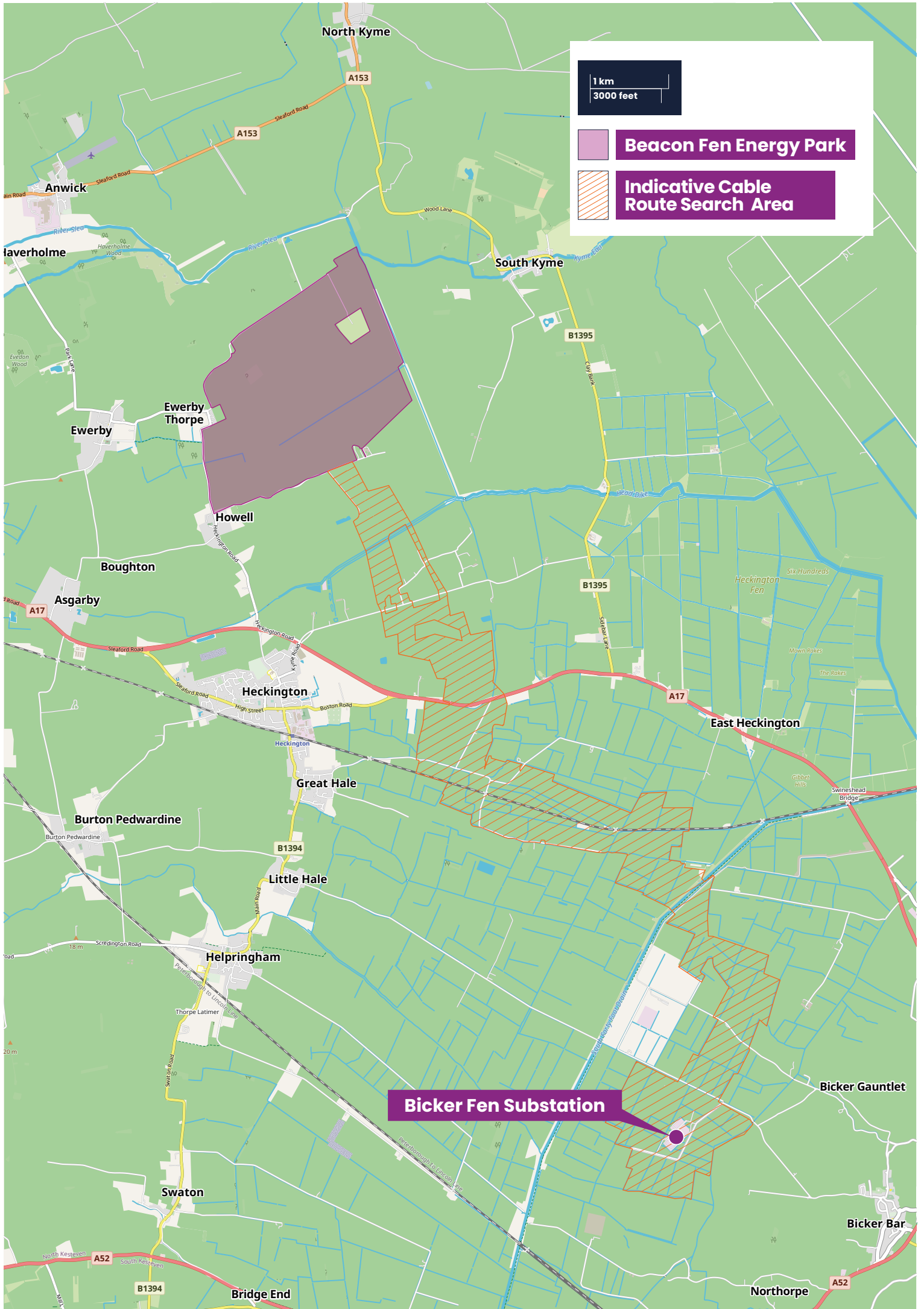
- Progressing with Beacon Fen North, which will now simply be referred to as Beacon Fen Energy Park. If given consent, the project would generate an estimated 400MW of renewable electricity to power up to 130,000 homes and avoid approximately 72,000 tonnes of CO₂ emissions annually.
- A Battery Energy Storage System (BESS) that will allow storage of the generated electricity and the import and export of electricity from the grid to provide grid balancing services.
- A proposed new cable route search area to take into account the withdrawal of the south site from the project. The new search area will provide a more suitable route to connect the energy park to the Bicker Fen substation.

Renewable energy is urgently needed to fully decarbonise the UK's electricity system by 2035 and we believe Beacon Fen Energy Park will contribute significantly to this need since it could be developed as soon as 2029.

LOW CARBON ATTENDS THE HECKINGTON SHOW 2023


Thank you to all who came and engaged with us at the Heckington Show. We were joined by Mad Science who wowed families with their energy generation experiments. Dozens of you took the time to fill out your own climate pledges outlining simple ways you can make a positive change to help fight climate change, while we received more than 50 entries to our bug hotel competition. We are looking forward to announcing the winner soon!





1 km
3000 feet

 Beacon Fen Energy Park

 Indicative Cable Route Search Area

Bicker Fen Substation

Your questions answered

During our early consultation, consultees raised a number of queries about the project.

Will the site be lit at night?

The site will not be floodlit at any time.

Will the project create any jobs once it's built?

Once operational, Beacon Fen Energy Park would have an estimated 14 permanent employees.

How are you assessing which roads to use for construction traffic?

We have recently undergone traffic count surveys to better understand the local transport infrastructure and will continue to carry out necessary survey works. This work will enable us to discount certain routes and will inform our Construction Traffic Management Plan, a document that will be produced for review and comment during our statutory consultation phase.

We are also considering the potential for a bespoke access for construction. Local roads and infrastructure were of particular importance to residents during our recent consultation. The information communities have provided has proved invaluable. More transport and access details will be available during statutory consultation.

Are you aware of other energy parks being proposed for the surrounding area?

We are aware of other developments, particularly in the vicinity of Bicker Fen substation, and are exploring opportunities to either integrate with or keep a distance from their cable routes and construction access proposals to minimise impacts on local roads and communities during construction.

Are you aware of the diverse wildlife in the area?

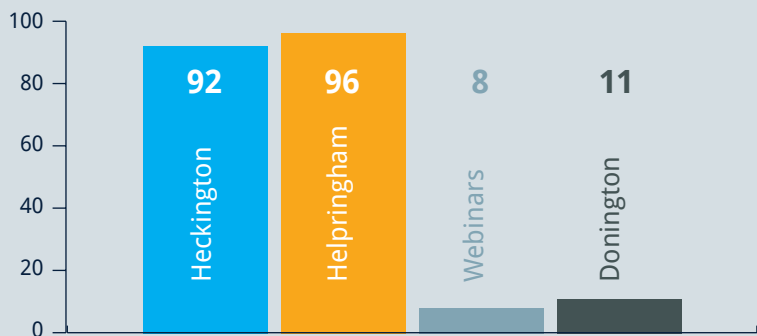
Our environmental consultants are carrying out a range of surveys and assessments to collect information and data on local wildlife and ecology. The latest research shows well designed and well managed solar farms have the potential to make significant contributions to addressing biodiversity loss*. A variety of invertebrates, birds and mammals including deer and rabbits have all been recorded in a 2022 study*.

* For information on biodiversity at UK solar parks, search for Solar Habitat: A Look into ecological trends on solar farms in the UK, a report by Solar Energy UK.

Early (non-statutory) consultation feedback

Almost 100 people gave their feedback during our early (non-statutory) consultation which ran from May to June 2023.

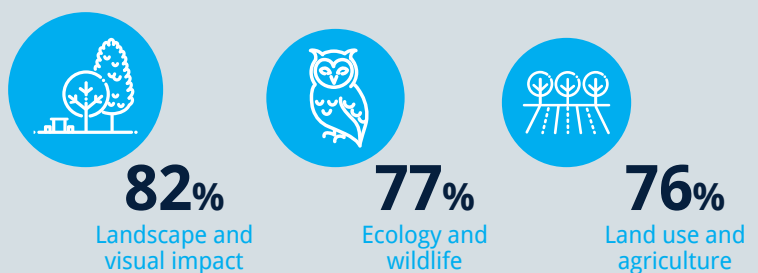
How many people attended events?



Who gave us their feedback?



Which 3 aspects of the project are most important to respondents?



Top 3 benefits respondents would like to see?



Planned Timeline

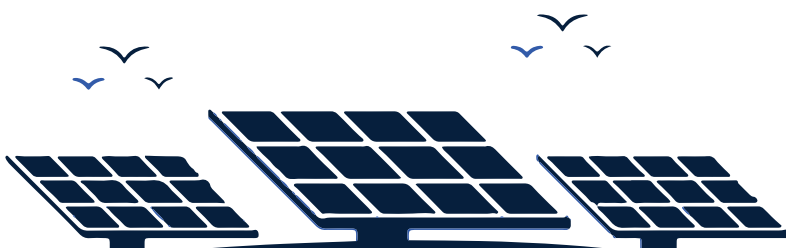


WE ARE
HERE

What's next for the project?

Soon we will produce a draft Statement of Community Consultation (SoCC), a statutory document which outlines how we intend to consult with local residents and stakeholders during our formal consultation phase. After carrying out a consultation with the relevant local authorities on our draft SoCC, we will publish and share it during Autumn 2023.

Our consultants are currently working hard carrying out ongoing environmental assessments to feed into our Preliminary Environmental Information Report (PEIR) and identify possible required mitigation measures associated with the project. Once all necessary information has been gathered and assessed, we will launch our statutory consultation which is currently scheduled for winter 2023/24. Communities and stakeholders will be invited to take part in this consultation nearer the time.



Contact Us

There are many ways you can keep in touch with Beacon Fen Energy Park, including signing up to the mailing list on the Beacon Fen Energy Park website.

Website beaconfenenergypark.co.uk **Email** info@beaconfenenergypark.co.uk
Post FREEPOST Beacon Fen Energy Park (no stamp required) **Phone** 0330 057 1943